

FOTRIC

CONNECTING THE DIGITAL FUTURE

Your First Step to Professional Thermography



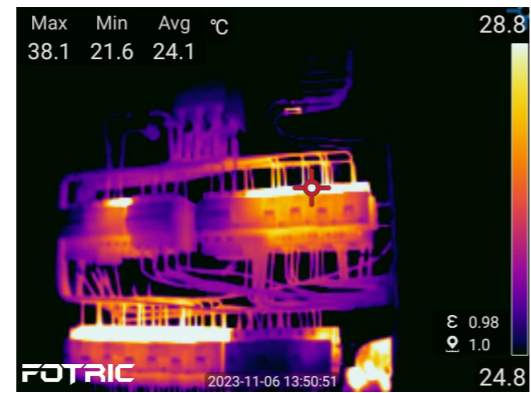
FOTRIC TK Series

Industrial Grade Thermal Camera

Accurate Temperature Measurement

Precision at your fingertips – Perfect focus for flawless temperature readings.

- Manual focus, ensures concise measurement at all distances.
- 49° wide angle shot, to always see the big picture. Help you infer the root of the thermal anomaly.
- 40mk thermal sensitivity, unveil subtle flaws. No damp spot ever escapes your sight.

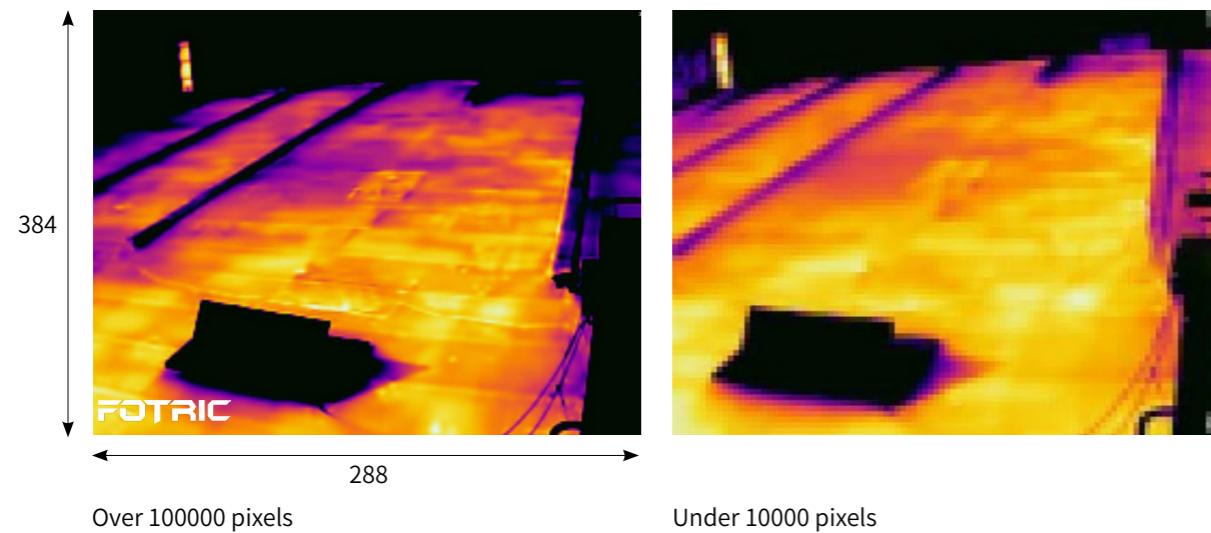


40mk thermal sensitivity reveal every anomaly

Superior Image Quality

Image quality is more about aesthetics, but directly impacts the quality of your presentation.

- 384*288 thermal pixels, presenting your findings with unprecedented clarity.
- Super resolution, boost the performance to expert level.
- T-DEF® Blend 0~100% adjustable transparency. Select the best way present your finding.
- Touch span to highlight the anomaly against the environment.



Robust and Intuitive Design

A perfect combination of ruggedness ingenuity.

- Function shortcut button, tailor what the camera does to what you need.
- Spacious 3.5" LCD touch screen that enable both screen and button operation.
- 8MP industrial grade digital camera, enables flawless inspection result presentation.
- Dust and water resistant (IP54), made for durability and industrial adaptability.

Unparallel Response Speed

Your thermal camera should never slow you down. It's all about user experience.

- Powered by Android, it flows as smoothly as your smartphone.
- Fluent remote control with every operation system (Windows, MacOS, Android, IOS), so you can access your work from everywhere.

Applications



Specifications

	TK8	TK7
Core Parameters		
Thermal Resolution	384*288	
Super Resolution(SR)	Support	
IR Detector Type	Uncooled FPA infrared detector	
Thermal Sensitivity (NETD)	40mk(0.04° C)(86 °F)	
Detector Pitch	17μm	
Spectral Range	8-14μm	
Frame Rate	30Hz	
Field of View (FOV)	25° *19°	49° *37°
IFOV	1.14 mrad	2.23 mrad
Minimum Focus Distance	0.15m	0.4m
Focal Length	15mm	8mm
Focus Mode	Manual focus	Focus free
Digital Zoom	1-8x, continuous	
Temperature Analysis		
Complete Temperature Range	-20~550°C (-4~1022 °F)	
Temperature Range	-20~120°C (-4~248 °F) , 0~550°C (32~1022 °F), Intelligent range.	
Measurement Accuracy	± 2°C (3.6 °F) or ± 2 % , whichever is greater (ambient temperature at 15~35° C(59~95 °F)).	
Measurement Tools	Spot: 6 ; Line: 3 ; Rectangle/Circle: 4	
Measurement Parameters	Emissivity, Ambient Temp, Partial Emissivity, Reflected Temp, Relative Humidity, Distance, IR Window Compensation.	
Partial Emissivity	Support	
ROI Alarm	Support	
Delta T/Temperature Rise	Support	
On Device Analysis	Support On-device Radiometric Image Analysis	
PC Software	AnalyzeIR	
Image Display		
Display Screen	3.5 inch Touch Screen	
Image Mode	Thermal image、Visible light、Picture in Picture & T-DEF® Blend	
Palette	8: Grey、Iron、Rainbow、GreyRed、Rain、GlowBow、Medical、Prism	
Inverted Palettes	Support	
Minimum Temperature Span	Auto:3° C (5.4 °F) , Manual and Touch:2° C (3.6 °F)	
Color Alarm	Support	
Image Overlay	Max, min, avg temperature and measurement parameters	
Hot and Cold Spot Tracing	Automatic recognition and tracing	
T-DEF®	Adjustable transparency 0% ~100%	
T-TWB®	Tempertature visual representation normalization option	
PIP	Moveable and Resizable	

Specifications

Capture Functions	
Digital Camera	8 MP industrial camera
Storage Card	TF card, 32GB, expandable to 128GB
Single frame capture	Support
Image Format	JPEG
Video Format	MP4
Freeze Image	Support
QR Code	Support
Voice Annotation	Support (120 seconds)
Text Annotation	Support
Tags	Support
Favorite	Support (filter favorite files)
MP4 Recording	Support
Gallery	Support viewing, editing and deleting existing files
Data Connection	
WiFi	Support 2.4GHz&5GH channel, Support 802.11a/b/g/n/ac
Bluetooth	Support
USB	USB Type-C type; USB 3.0 / 2.0 compliant, Support USB OTG
HDMI	Micro HDMI type, HDMI 1.4 compliant, Support 1080P imaging video streaming in 60Hz.
Remote Access	Support
Remote Control	Mobile and PC webpage access via IRExplorer.
Auxiliary Features	
Software and Firmware Upgrade	TF card upgrade
Laser	Level 2; wavelength: 635nm; Power: <1mW
LED Flash Lamp	Support, serves as lamp and flash light
Power System	
Battery	Rechargeable Li-ion, 3.6V, 5000mAh
Battery Operation Time	≥ 4 hours
Charging Methods	Support battery dock adaptor and Type-C interface (compatible with cell phone charger).
Battery Charging Time	3.5 hours to full-charge by battery dock. 2.5 hours to full-charge by connect to camera.
Energy Save	Auto Screen-off
External Power Source	Type-C connect to PC or Power adaptor (5V, 3A)
Reliability and Certificates	
Safety	SELV relay (IEC60950-1)
EMC Compatibility	IEC 61000-4-2
Enclosure Rating	IP54
Drop	2m(IEC 60068-2-32)
Shock	25g(IEC 60068-2-27)
Vibration	2g(IEC 60068-2-6)
RoHS Compliant	Yes

Specifications

Physical Parameters	
Operation Temperature	-20~50°C (-4~122 °F)
Storage Temperature	-40~70°C (-40~158 °F) without battery
Relative Humidity	<95%RH
Dimension (mm)	243*95*142mm
Weight (include battery)	0.8kg
Battery Weight	0.15kg
Casing Material	Hard Plastic :PC+ABS, Soft Rubber:TPE
Mounting Method	Support UNC 1/4-20 interface connecting tripod
Warranty	
Warranty	2 years
Recommended Calibration Cycle	2 years
Language	
Supported Language	English, Spanish, French, Korean, Traditional Chinese, Italian, German, Portuguese, Thai
Configurations	
Standard Configuration	FOTRIC handheld thermal camera, documentations(certificate of quality, certificate of calibration, warranty card, packing list), user manual, USB-Type C cable, TF card TF card reader, power adaptor, 2 piece of battery.

Innovation Excellence Integrity

FOTRIC INC. All Rights reserved
April 2024

www.fotric.com